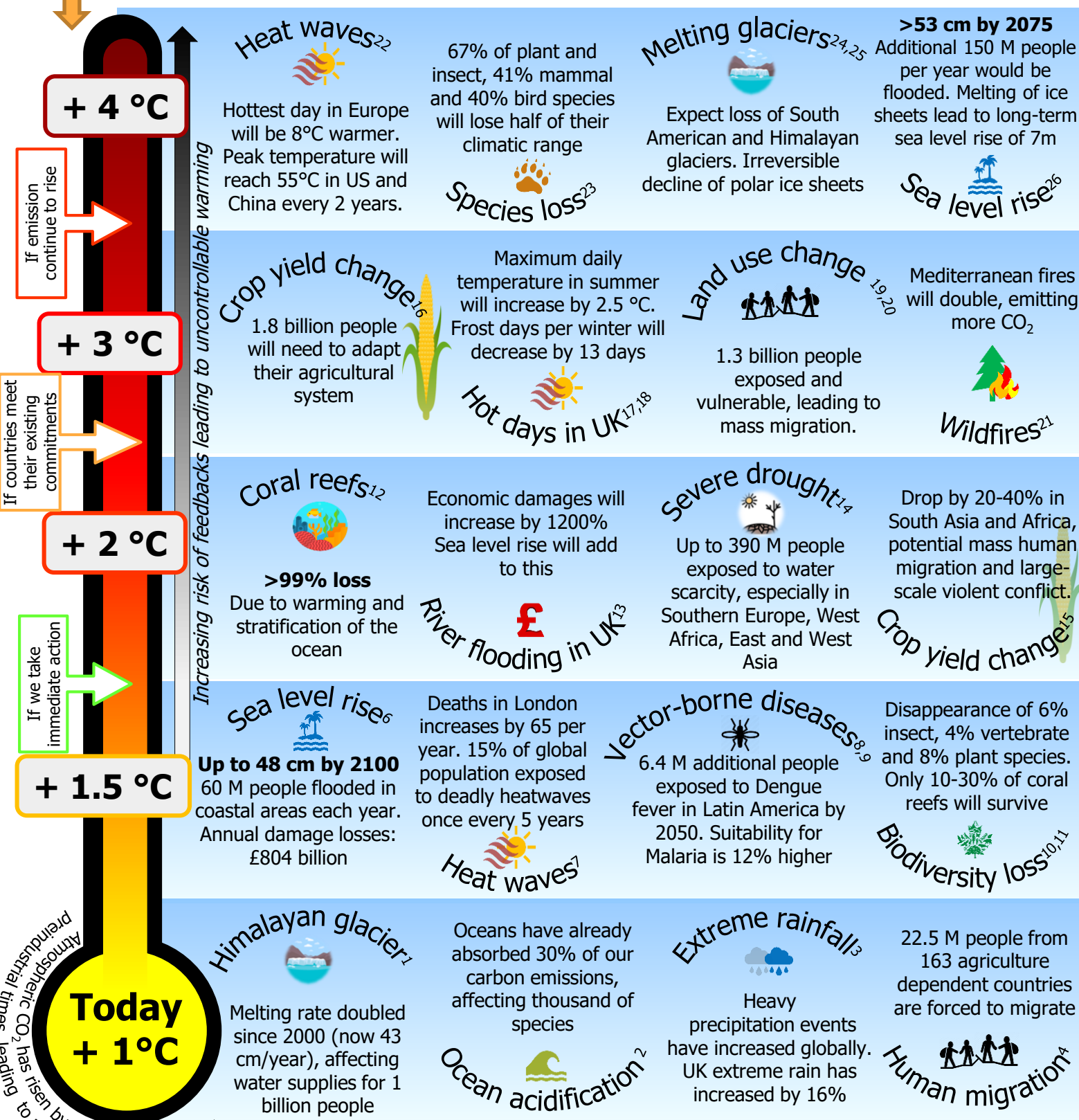


CLIMATE CHANGE IMPACTS

Global mean surface temperature rise above preindustrial levels

The global climate has changed relative to the pre-industrial period affecting organisms, ecosystems and human populations. Higher temperatures increase the frequency and magnitude of impacts, which grow rapidly for small temperature changes. Below are a few examples of predicted impacts of climate change, some of them associated with long-lasting and irreversible risks to nature and humans. The Paris agreement (2016) aims to keep warming well below 2°C to avoid severe impacts, which requires immediate actions.



We all need to halve emissions by **2030** and reach net-zero by **2050** to limit warming to around 1.5°C by the end of the century

